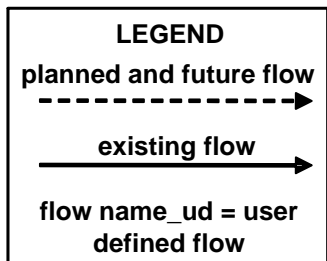
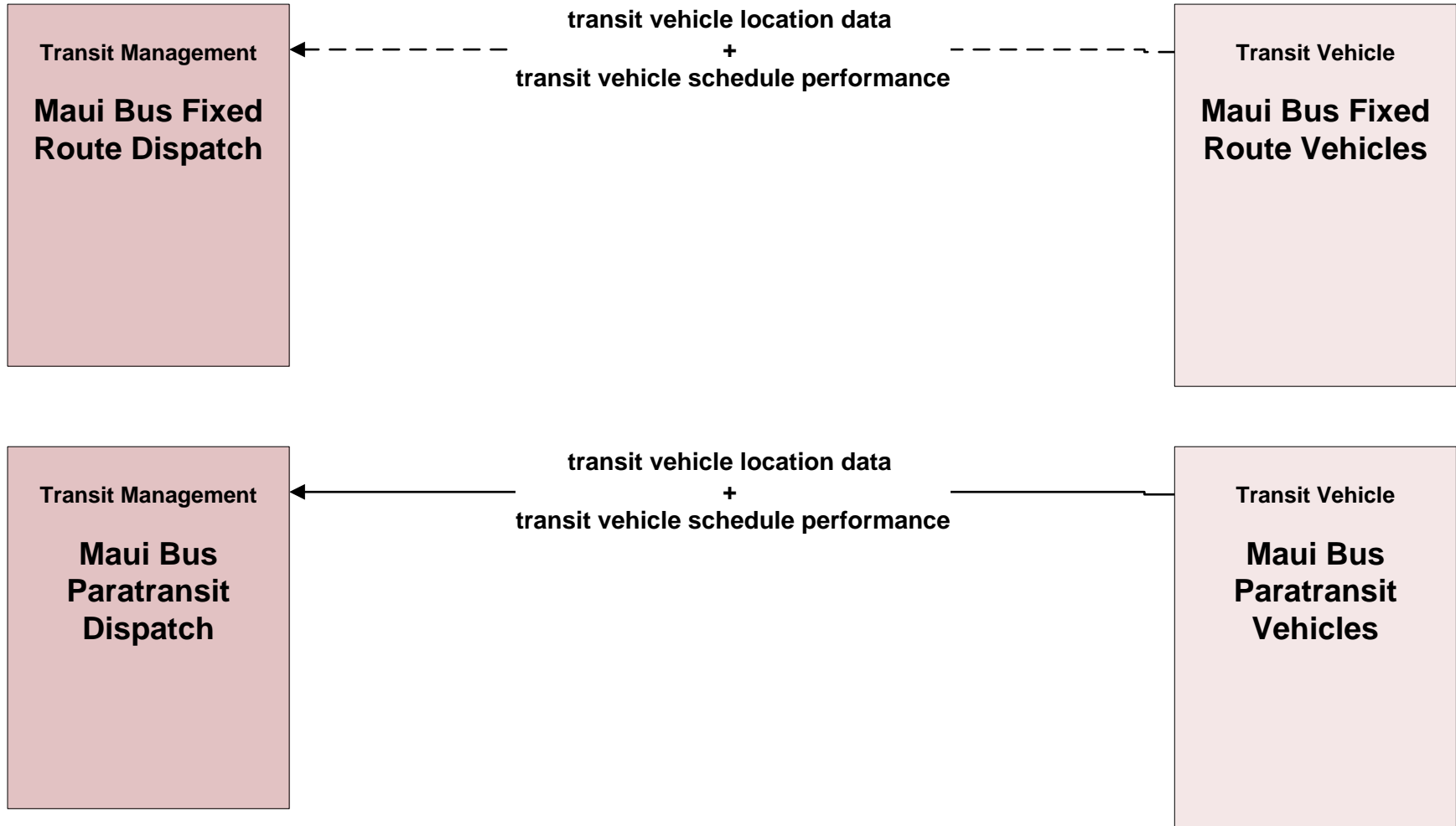


# **Maui Regional ITS Architecture**

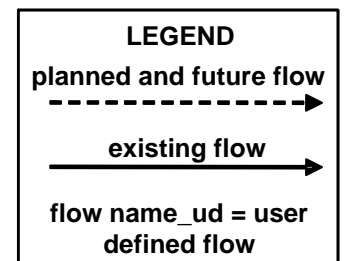
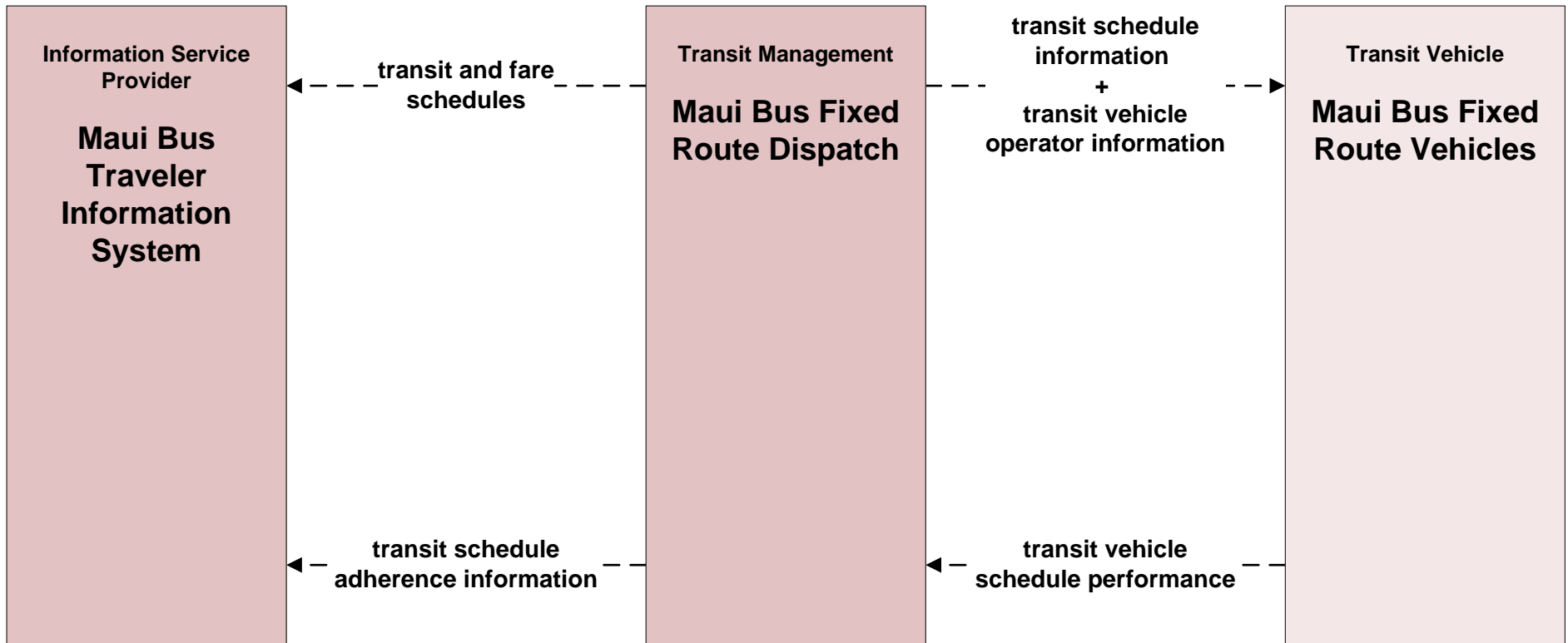
## **Customized Service Package Diagrams**

### **Advanced Public Transportation Systems (APTS)**

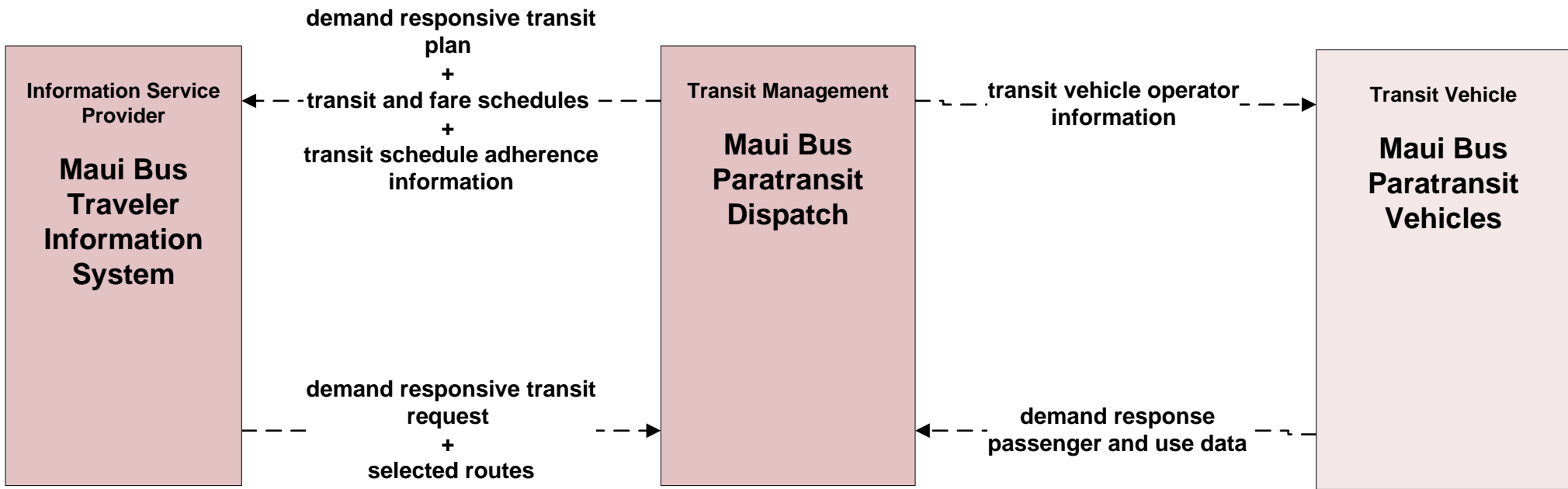
# APTS01 - Transit Vehicle Tracking Maui Bus



# APTS02 - Transit Fixed-Route Operations Maui Bus



**APTS03 - Demand Response Transit Operations  
Maui Bus**



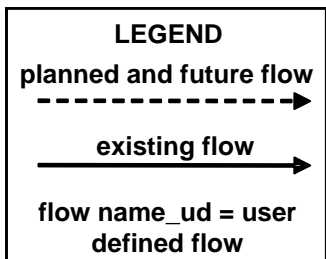
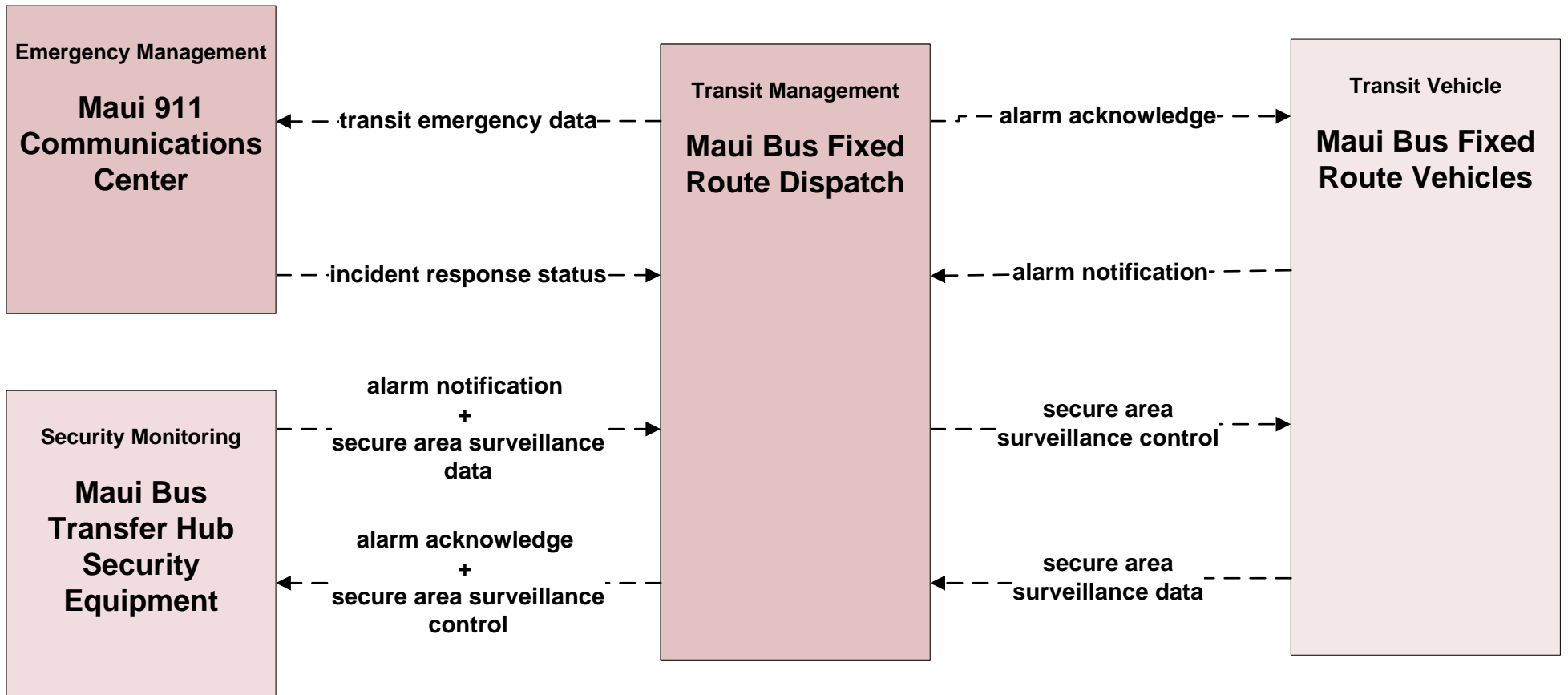
**LEGEND**

planned and future flow  
----->

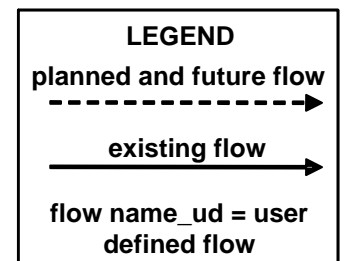
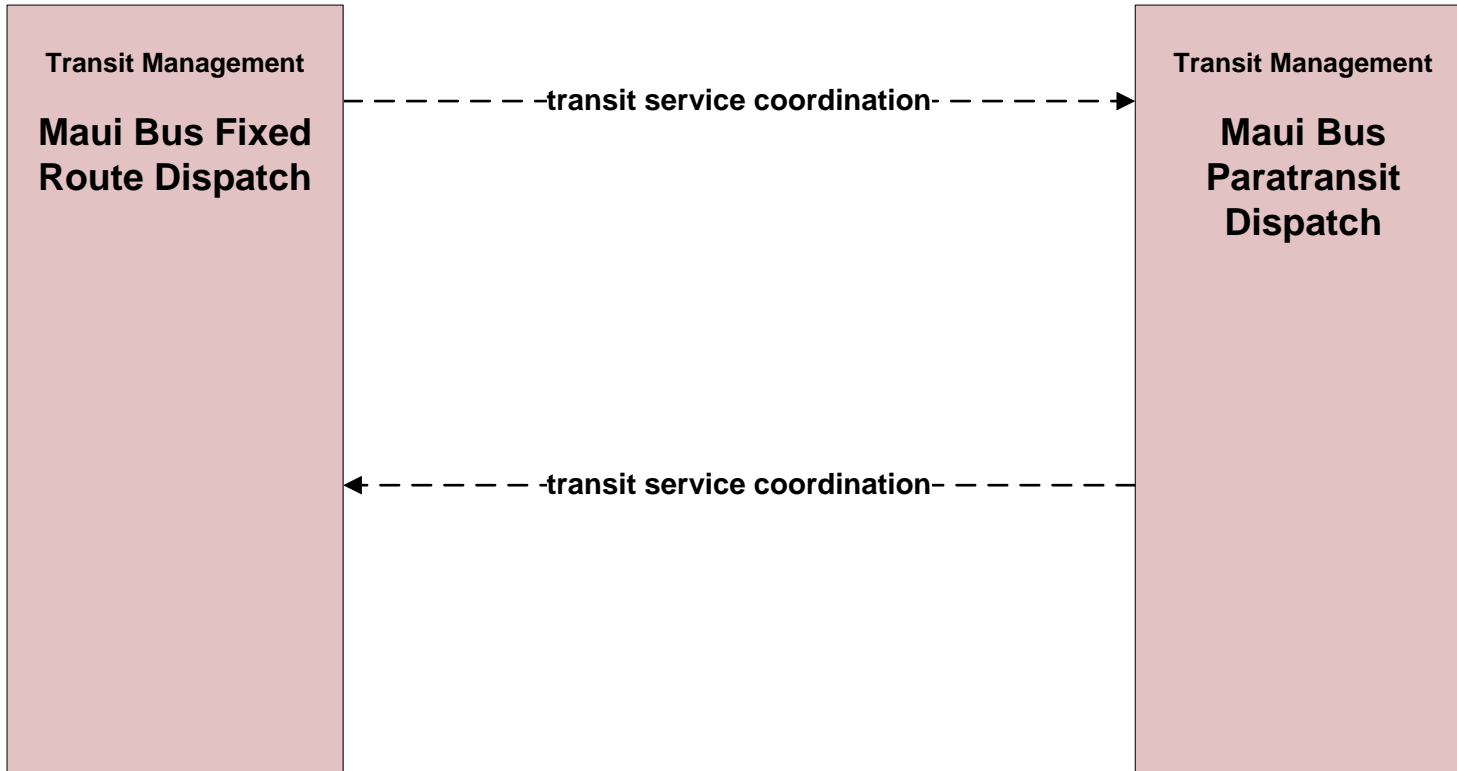
existing flow  
—————>

flow name\_ud = user defined flow

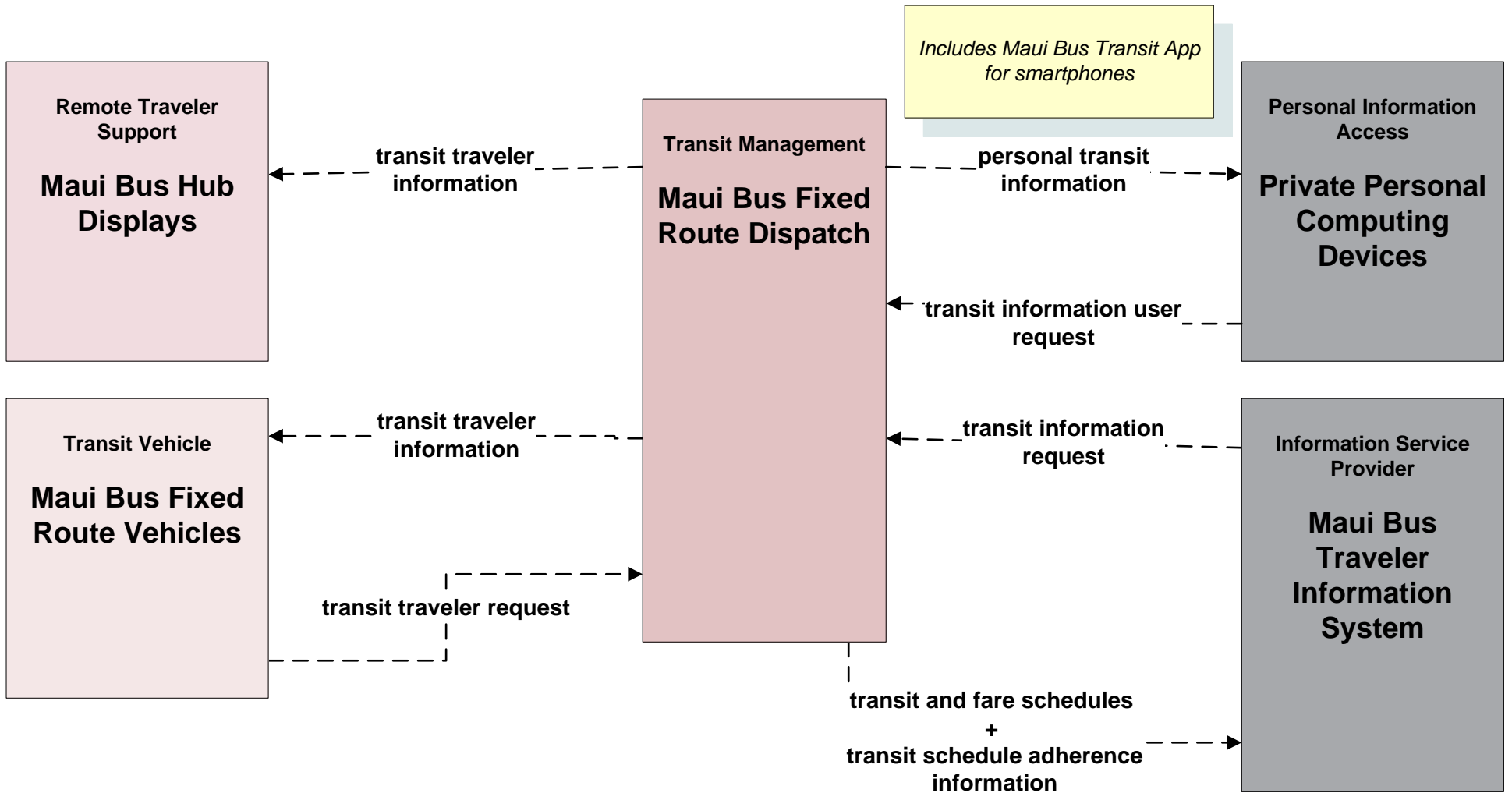
# APTS05 - Transit Security Maui Bus



**APTS07 - Multi-modal Coordination  
Maui Bus**



# APTS08 - Transit Traveler Information Maui Bus



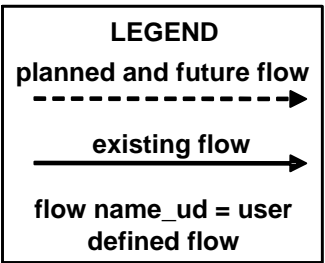
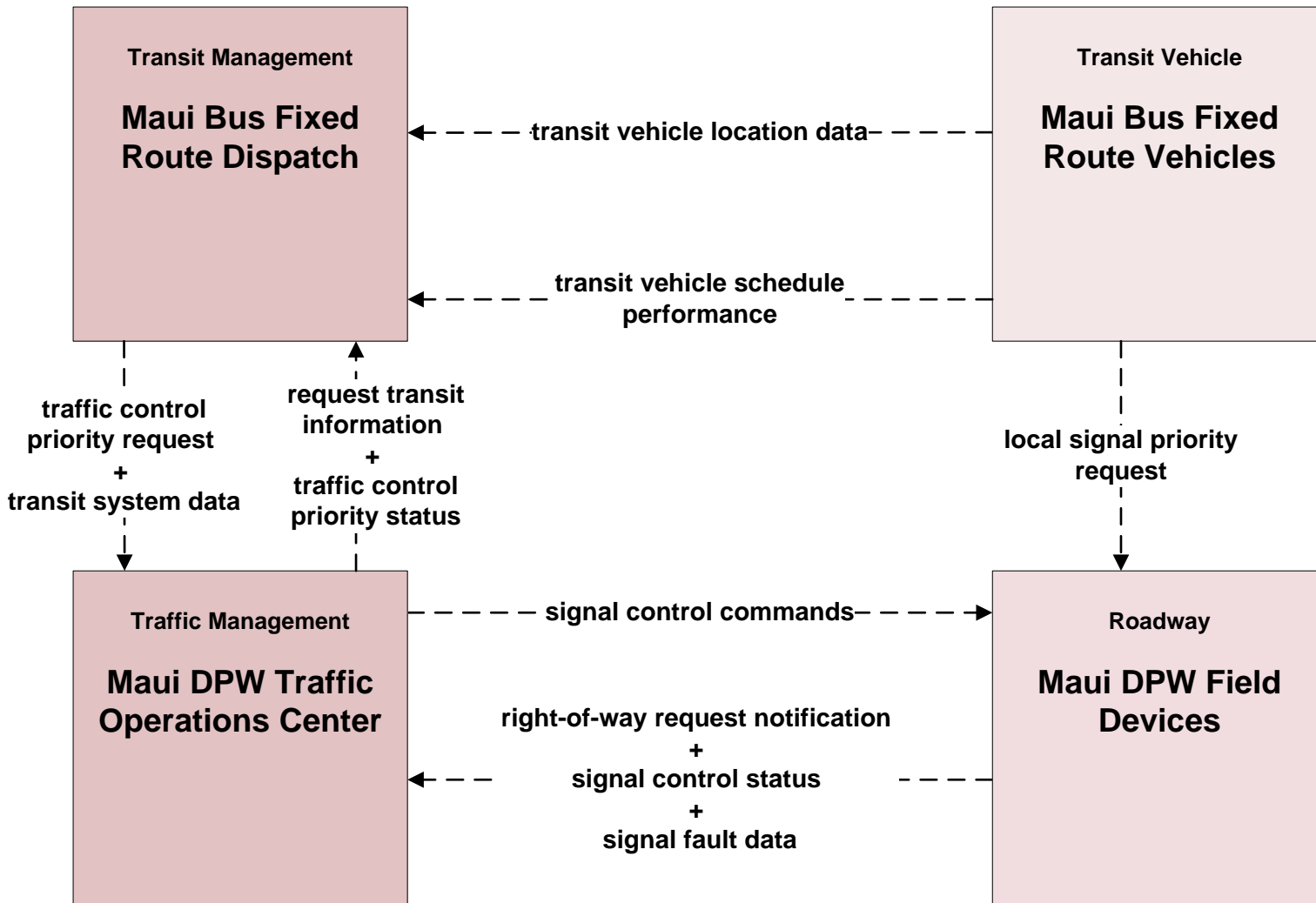
**LEGEND**

planned and future flow  
 ----->

existing flow  
 \_\_\_\_\_>

flow name\_ud = user defined flow

# APTS09 – Transit Signal Priority Maui Bus





**APTS10 – Transit Passenger Counting  
Maui Bus**

